

GENERAL DESCRIPTION

The SPX431A is a three-terminal adjustable shunt voltage regulator providing a highly accurate bandgap reference.

The SPX431A acts as an open-loop error amplifier with a 2.5V temperature compensation reference. The SPX431A has thermal stability, wide operating current of 150mA and broad temperature range of -40°C to 125°C, making it suitable for a variety of applications which require a low-cost, high performance solution. The SPX431A tolerance of 0.5% is proven to be sufficient to overcome all other errors in the system to virtually eliminate the need for trimming in the power supply manufacturer's assembly line and contribute a significant cost savings. The output voltage may be adjusted to any value between V_{REF} and 36 volts with two external resistors.

The SPX431A is available in RoHS compliant, lead free TO-92 and SOT-89 packages.

The SPX431A product is obsolete.

APPLICATIONS

- **Charger**
- **Switching Power Supplies**
- **Graphic Cards**
- **Monitors, VCRs, TVs**

FEATURES

- **0.5% Precise Output Voltage**
 - Adjustable up to 36V
- **Wide Operating Current**
 - 1mA to 150mA
- **Low Temperature Coefficient at 30ppm/°C**
- **Extended Temperature Range**
 - 40°C to +125°C
- **Improved Replacement for TL431**
- **RoHS Compliant, Lead Free TO-92 and SOT-89 Packages**

TYPICAL APPLICATION DIAGRAM

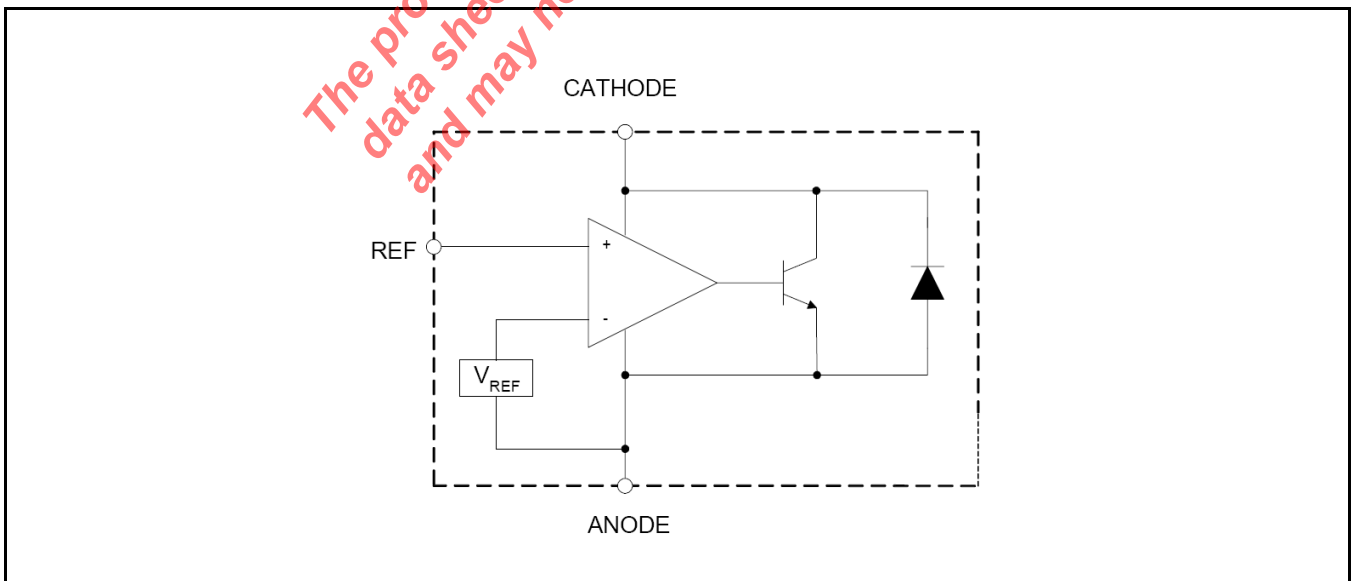


Fig. 1: SPX431A Application Diagram

Precision Adjustable Shunt Regulator
ABSOLUTE MAXIMUM RATINGS

These are stress ratings only and functional operation of the device at these ratings or any other above those indicated in the operation sections of the specifications below is not implied. Exposure to absolute maximum rating conditions for extended periods of time may affect reliability.

Cathode-Anode Reverse Breakdown Volt. V_{KA} 37V
 Operating Cathode Current (cont.) I_{KA} 150mA
 Reference Input Current Range I_{REF} 10mA
 Power Dissipation SOT-89-TO-92 (Cont. 25°C) P_D .. 770mW
 Junction Temperature 150°C
 Storage Temperature T_{STG} -65°C to 150°C
 ESD Rating (HBM - Human Body Model) 2kV

OPERATING RATINGS

Cathode-Anode Reverse Breakdown Volt. V_{KA} 36V
 Operating Cathode Current (cont.) I_{KA} <100mA
 Ambient Temperature Range -40°C to 125°C

ELECTRICAL SPECIFICATIONS

Specifications with standard type are for an Operating Ambient Temperature of $T_A = 25^\circ\text{C}$ only; limits applying over the full Operating Ambient Temperature range are denoted by a "•". Minimum and Maximum limits are guaranteed through test, design, or statistical correlation. Typical values represent the most likely parametric norm at $T_A = 25^\circ\text{C}$, and are provided for reference purposes only.

Parameter	Min.	Typ.	Max.	Units	Conditions
Reference Voltage	2.493	2.503	2.515	V	Test circuit 1 $V_{KA}=V_{REF}, I_{KA}=10\text{mA}$
ΔV_{REF} with temperature T_C		4.5	8	mV	Test circuit 1 $V_{KA}=V_{REF}, I_{KA}=10\text{mA}, 0^\circ\text{C} \leq T_A \leq 70^\circ\text{C}$
ΔV_{REF} with temperature T_C		4.5	16	mV	• Test circuit 1 $V_{KA}=V_{REF}, I_{KA}=10\text{mA}$
Ratio of change in V_{REF} to Cathode Voltage $\Delta V_{REF} / \Delta V_{KA}$	-2.7	-1.0		mV/V	Test circuit 2 $V_{REF} \leq \Delta V_{KA} \leq 10\text{V}, I_{KA}=10\text{mA}$
	-2	-0.4			Test circuit 2 $10\text{V} \leq \Delta V_{KA} \leq 36\text{V}, I_{KA}=10\text{mA}$
Reference Input Current I_{REF}		0.7	4	μA	Test circuit 2 $I_{KA}=10\text{mA}, R1=10\text{k}\Omega, R2=\infty$
I_{REF} Temperature Deviation ΔI_{REF}		0.4	1.2	μA	• Test circuit 2 $I_{KA}=10\text{mA}, R1=10\text{k}\Omega, R2=\infty$
Minimum I_{KA} for Regulation $I_{KA(MIN)}$		0.4	1	mA	Test circuit 1 $V_{KA}=V_{REF}$
Off State Leakage $I_{KA(OFF)}$		40	250	nA	Test circuit 3 $V_{KA}=0, V_{REF}=36\text{V}$
Dynamic Outout Impedance Z_{KA}		0.15	0.5	Ω	Test circuit 1 $f_z \leq 1\text{KHz}, I_{KA}=1 \text{ to } 100\text{mA}$

BLOCK DIAGRAM

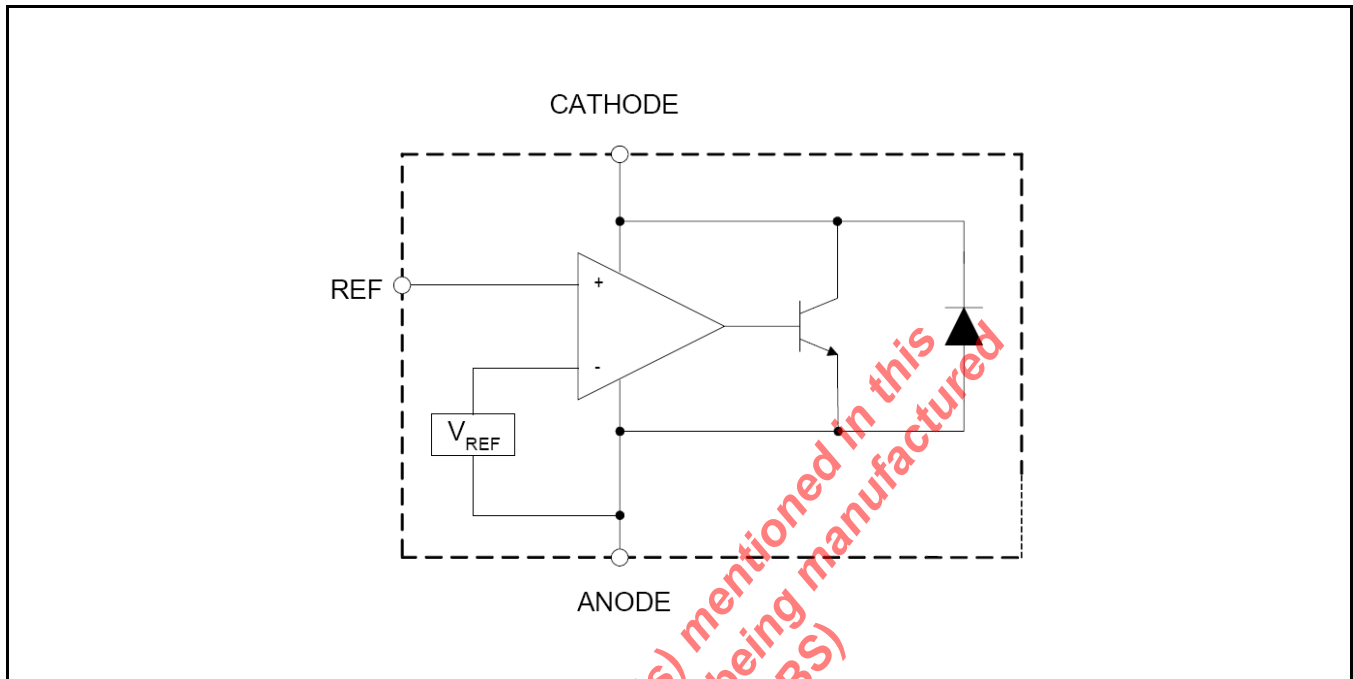


Fig. 2: SPX431A Block Diagram

PIN ASSIGNMENT

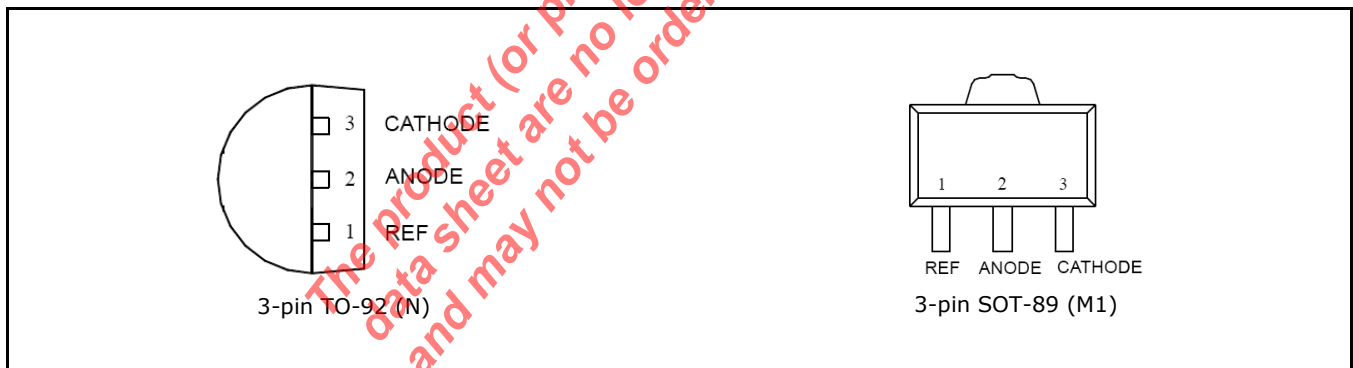


Fig. 3: SPX431A Pin Assignment

ORDERING INFORMATION

Part Number	Temperature Range	Package	Packing Quantity	Note 1	Note 2
SPX431AM1-L/TR	-40°C ≤ T _A ≤ +125°C	SOT-89	2.5K/Tape & Reel	RoHS Compliant Lead Free	
SPX431AN-L/TR	-40°C ≤ T _A ≤ +125°C	TO-92	2K/Tape & Reel	RoHS Compliant Lead Free	Ammo Pack

Note: The SPX431AM1-L/TR and SPX431AN-L/TR part numbers are obsolete. For more information about part numbers, as well as the most up-to-date ordering information and additional information on environmental rating, go to www.maxlinear.com/SPX431A.

TYPICAL PERFORMANCE CHARACTERISTICS

All data taken at $T_A = 25^\circ\text{C}$, unless otherwise specified - Schematic and BOM from Application Information section of this datasheet.

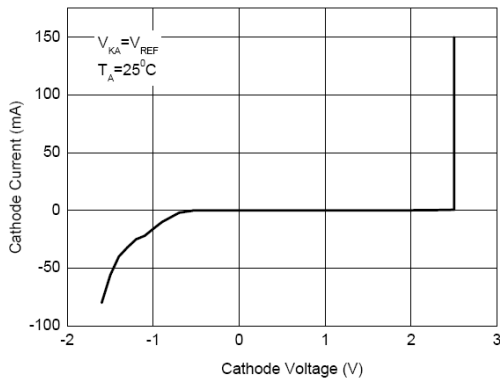


Fig. 4: Cathode Current vs Cathode Voltage

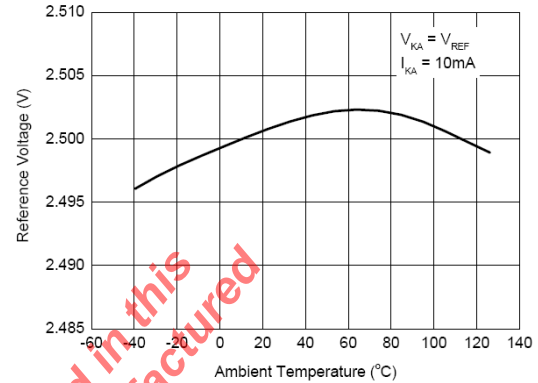


Fig. 5: Reference Voltage vs Ambient Temperature

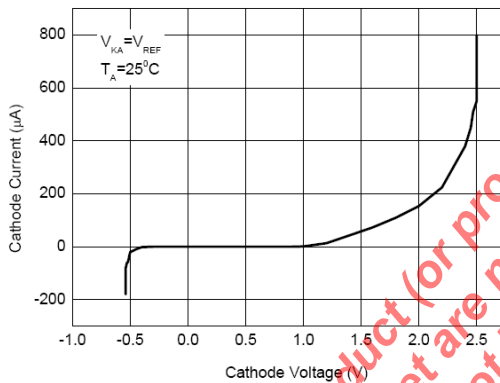


Fig. 6: Low Current Operating Characteristics

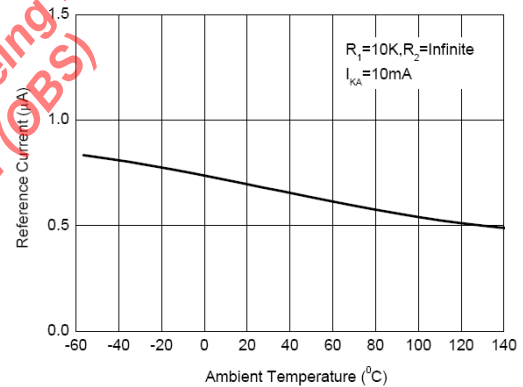


Fig. 7: Reference Input Current vs Ambient Temperature

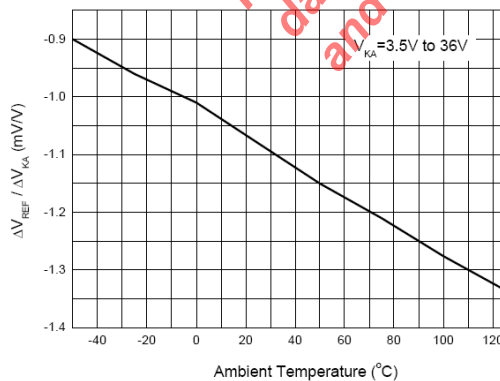


Fig. 8: Δ Reference Voltage to Δ Cathode Voltage Ratio

The product (or products) mentioned in this data sheet are no longer being manufactured and may not be ordered (OBS)

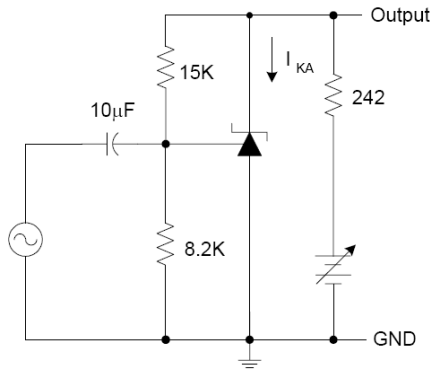


Fig. 9: Test Circuit for Gain vs Frequency Response

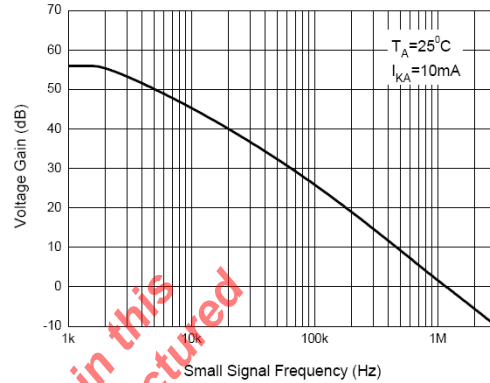


Fig. 10: Small Signal Gain vs Frequency

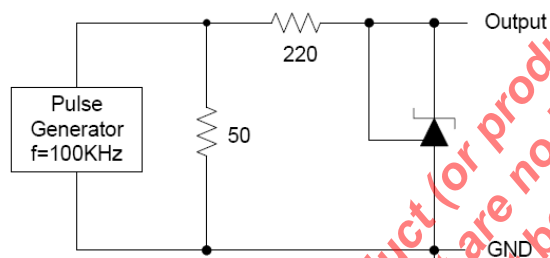


Fig. 11: Test Circuit for Pulse Response

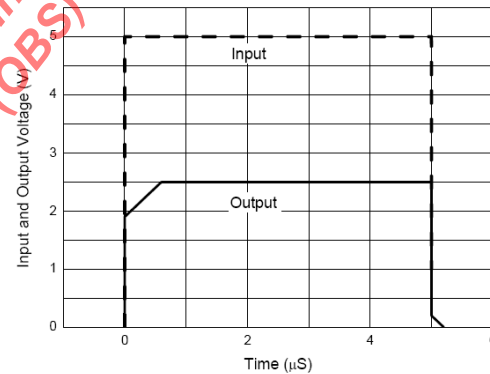


Fig. 12: Pulse Response

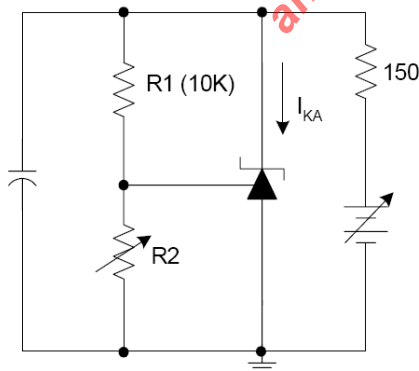


Fig. 13: Test Circuit for Stability

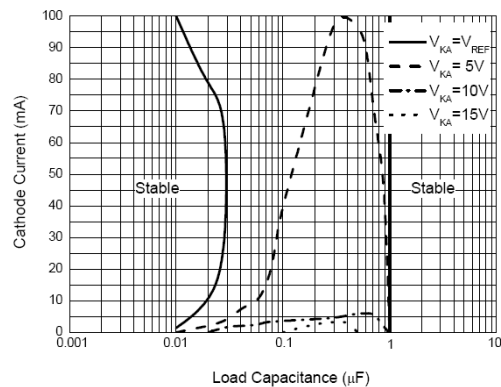


Fig. 14: Stability Boundary Conditions

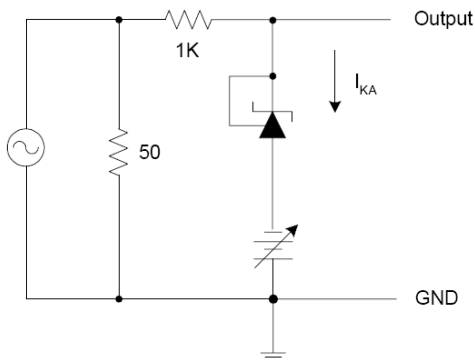


Fig. 15: Test Circuit for Dynamic Output Impedance

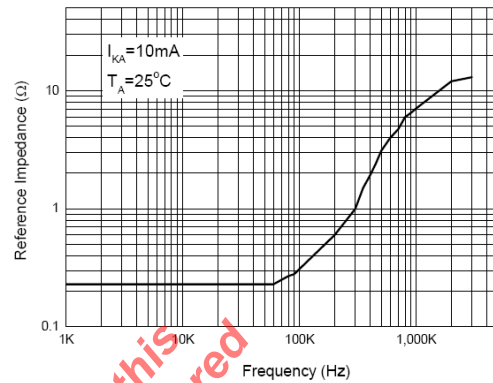


Fig. 16: Dynamic Output Impedance

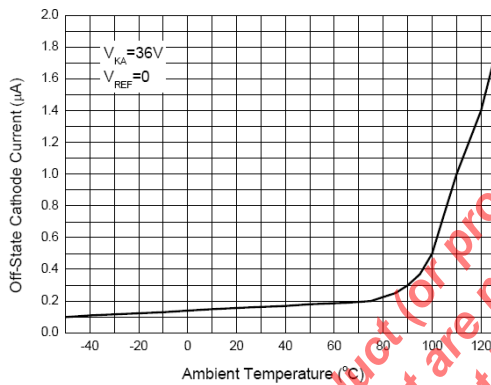
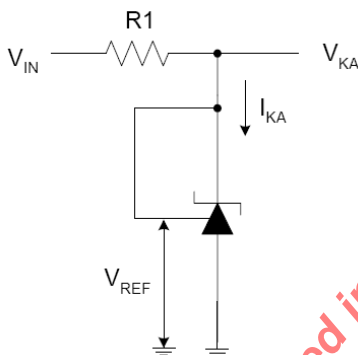
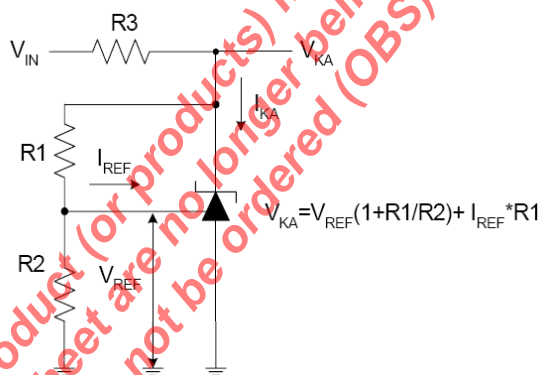


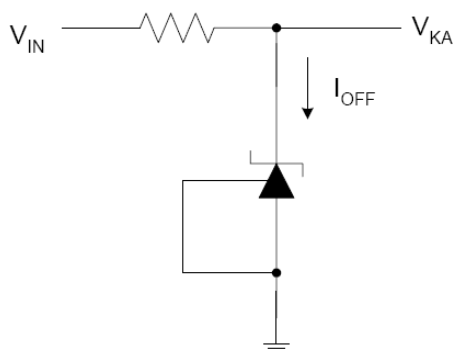
Fig. 17: Off State Leakage

The product (or products) mentioned in this data sheet are no longer being manufactured and may not be ordered (OBS)

TEST CIRCUITS
TEST CIRCUIT 1

 Test circuit for $V_{KA} = V_{REF}$

TEST CIRCUIT 2

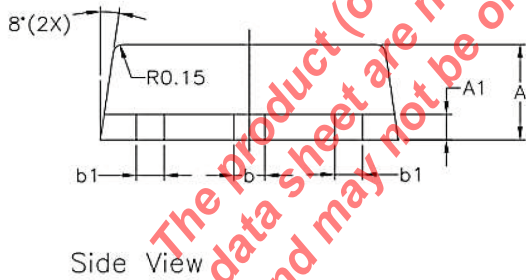
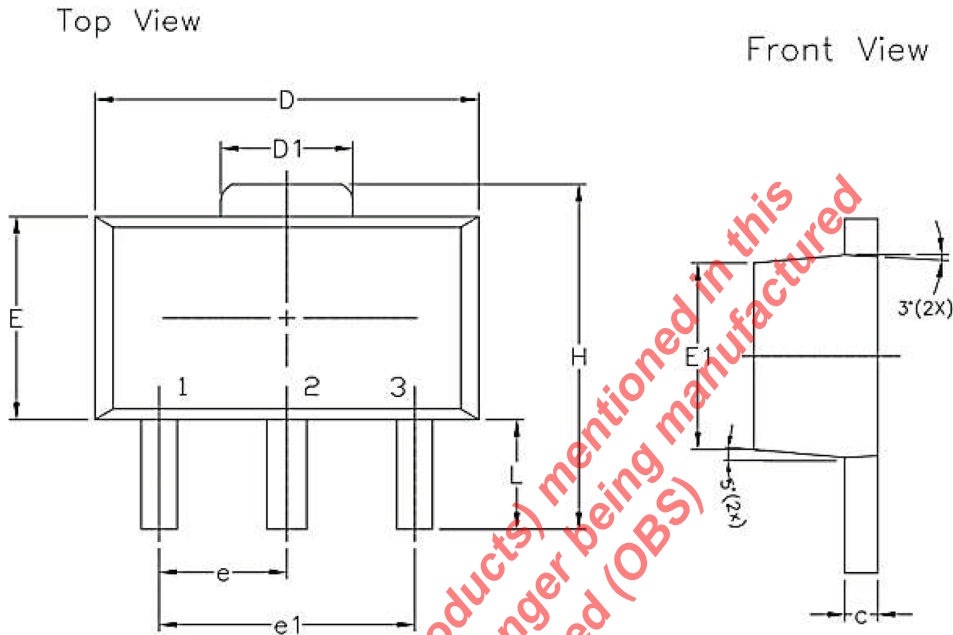
 Test circuit for $V_{KA} > V_{REF}$

TEST CIRCUIT 3

 Test circuit for I_{KOFF}


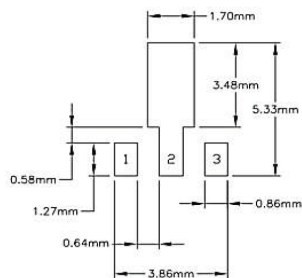
The product (or products) mentioned in this data sheet are no longer being manufactured and may not be ordered (OBS)

PACKAGE SPECIFICATION
SOT-89

Unit: mm (inch)



Recommended PCB Land Pattern



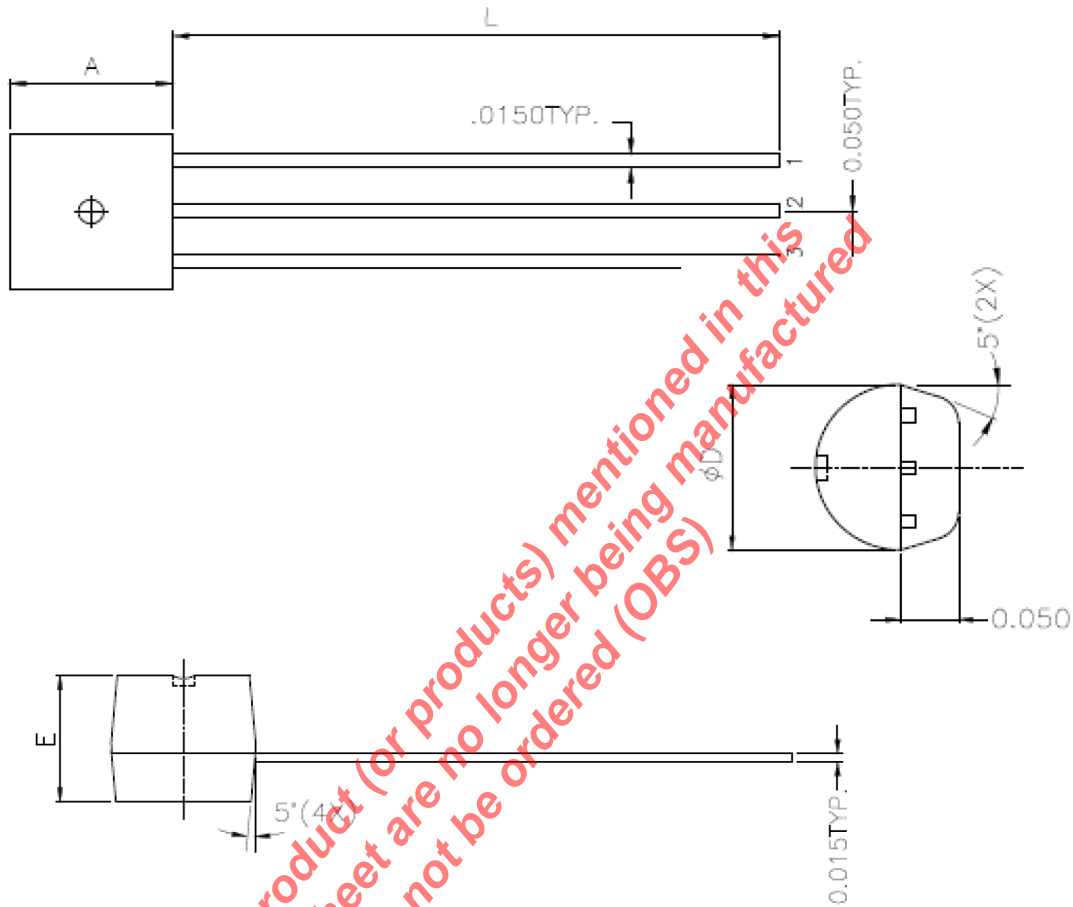
3 Pin SOT-89 JEDEC TO-243 Variation AA						
SYMBOLS	DIMENSIONS IN MM (Control Unit)			DIMENSIONS IN INCH (Reference Unit)		
	MIN	NOM	MAX	MIN	NOM	MAX
A	1.40	1.50	1.60	0.055	0.059	0.063
A1	0.30	0.40	0.50	0.011	0.015	0.019
b	0.44	0.47	0.56	0.017	0.018	0.022
b1	0.36	0.42	0.48	0.014	0.016	0.019
c	0.35	0.40	0.44	0.014	0.015	0.017
D	4.40	4.50	4.60	0.173	0.177	0.181
D1	1.62	1.60	1.83	0.064	0.062	0.072
E	2.29	2.50	2.60	0.090	0.098	0.102
E1	2.13	—	2.29	0.084	—	0.090
e	1.50 BSC			0.059 BSC		
e1	3.00 BSC			0.118 BSC		
H	3.94	—	4.25	0.155	—	0.167
L	0.89	—	1.20	0.035	—	0.047
N	3			3		

Drawing No.: POD-00000174

Revision: A

TO-92

Unit: mm (inch)



The product (or products) mentioned in this data sheet are no longer being manufactured and may not be ordered (OBS)

SYMBOL	INCHES		
	MIN.	NOR.	MAX.
A	.170	.180	.210
φD	.175	.180	.205
E	.125	.142	.165
L	.500	.580	

NOTE :
1. JEDEC : TO-92.

Drawing No.: POD-00000173

Revision: A



REVISION HISTORY

Revision	Date	Description
2.0.1	11/08/22	Updated: <ul style="list-style-type: none"> ■ Note under the "Ordering Information" table. ■ "SOT-89" POD. ■ "TO-92" POD. Removed: <ul style="list-style-type: none"> ■ In the "Ordering Information" table, "Marking" column.
2.0.0	04/15/09	Reformat of Datasheet Updated ordering part numbers Updated application and block diagram

The product (or products) mentioned in this data sheet are no longer being manufactured (OBS)



Corporate Headquarters:
5966 La Place Court
Suite 100
Carlsbad, CA 92008
Tel.: +1 (760) 692-0711
Fax: +1 (760) 444-8598
www.maxlinear.com

The content of this document is furnished for informational use only, is subject to change without notice, and should not be construed as a commitment by MaxLinear, Inc.. MaxLinear, Inc. assumes no responsibility or liability for any errors or inaccuracies that may appear in the informational content contained in this guide. Complying with all applicable copyright laws is the responsibility of the user. Without limiting the rights under copyright, no part of this document may be reproduced into, stored in, or introduced into a retrieval system, or transmitted in any form or by any means (electronic, mechanical, photocopying, recording, or otherwise), or for any purpose, without the express written permission of MaxLinear, Inc.

MaxLinear, Inc. does not recommend the use of any of its products in life support applications where the failure or malfunction of the product can reasonably be expected to cause failure of the life support system or to significantly affect its safety or effectiveness. Products are not authorized for use in such applications unless MaxLinear, Inc. receives, in writing, assurances to its satisfaction that: (a) the risk of injury or damage has been minimized; (b) the user assumes all such risks; (c) potential liability of MaxLinear, Inc. is adequately protected under the circumstances.

MaxLinear, Inc. may have patents, patent applications, trademarks, copyrights, or other intellectual property rights covering subject matter in this document. Except as expressly provided in any written license agreement from MaxLinear, Inc., the furnishing of this document does not give you any license to these patents, trademarks, copyrights, or other intellectual property.

MaxLinear, the MaxLinear logo, any MaxLinear trademarks (MxL, Full-Spectrum Capture, FSC, G.now, AirPHY, Puma, and AnyWAN), and the MaxLinear logo on the products sold are all property of MaxLinear, Inc. or one of MaxLinear's subsidiaries in the U.S.A. and other countries. All rights reserved. Other company trademarks and product names appearing herein are the property of their respective owners.

© 2022 MaxLinear, Inc. All rights reserved.